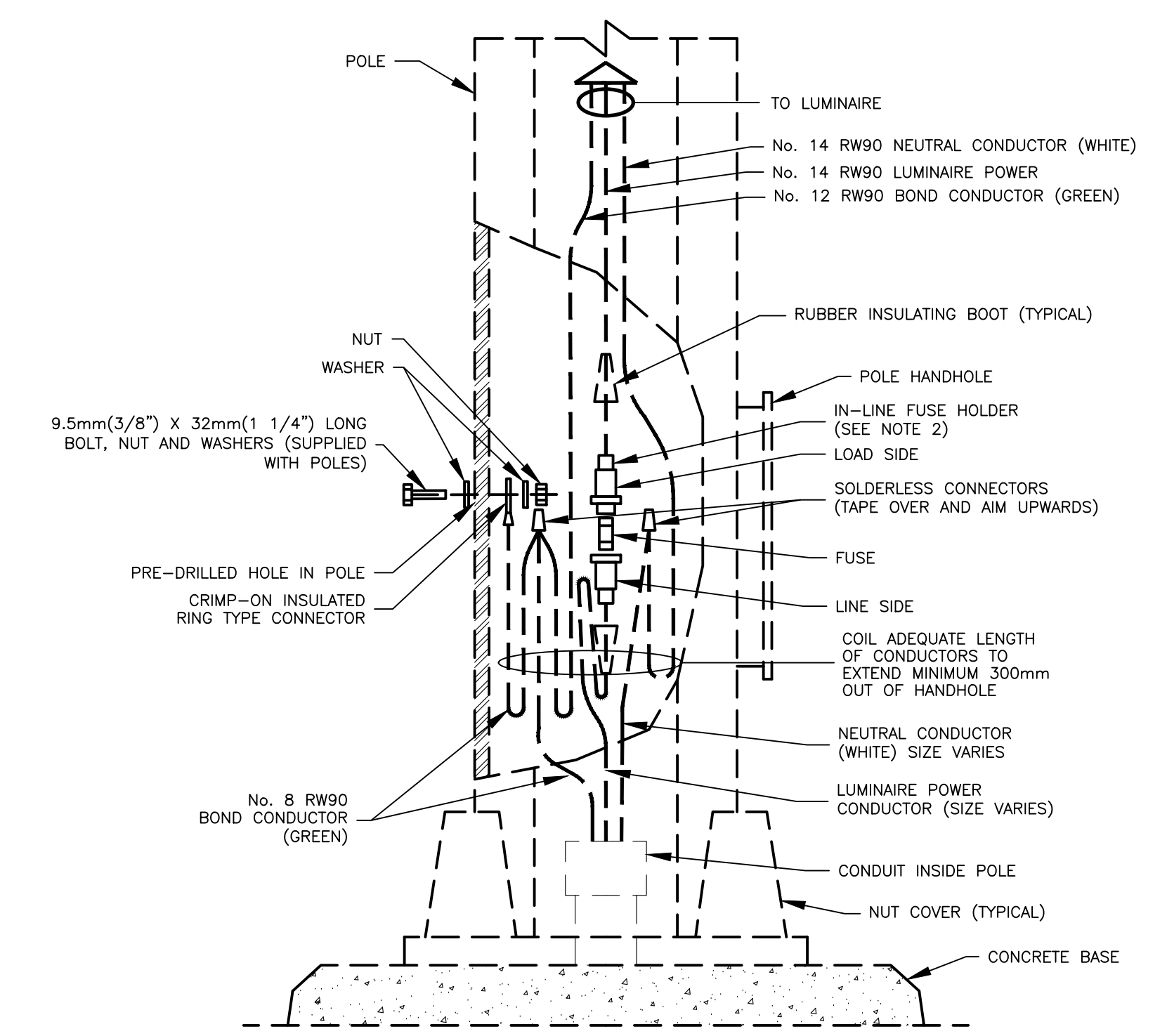
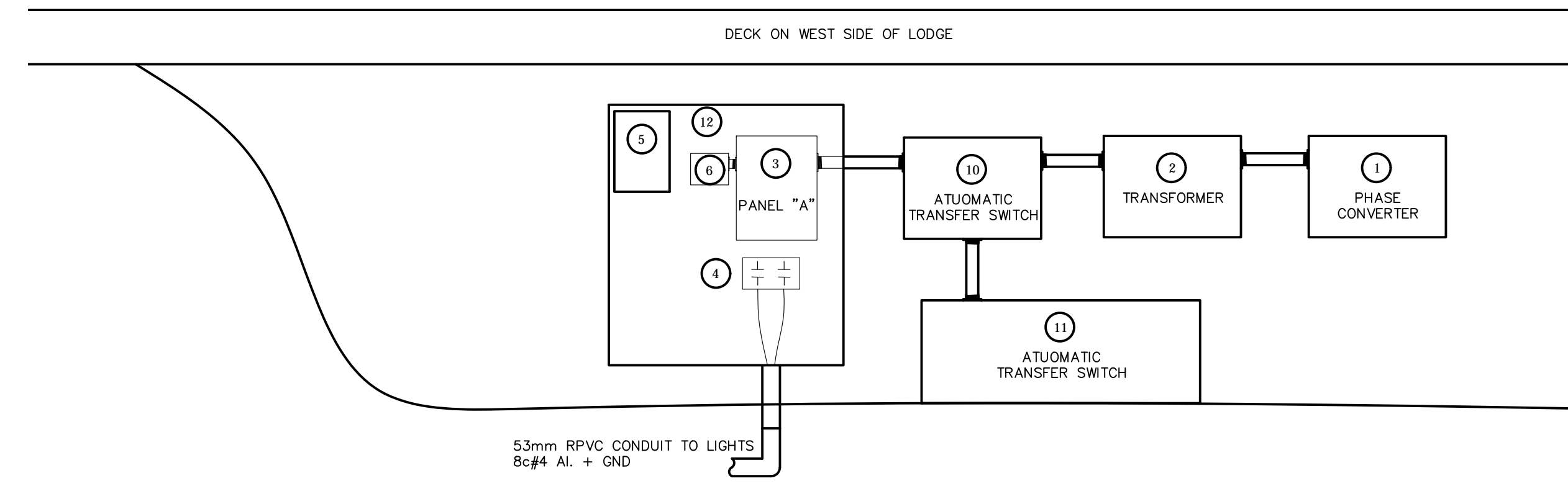


SINGLE LINE DIAGRAM
SCALE: NTS

MATERIAL LIST				
ITEM	QTY	MANUFACTURER	PART #	DESCRIPTION
1	1	PHASE TECHNOLOGIES	PT330	DIGITAL PHASE CONVERTER
2	1	OPEN	OPEN	15kVA 240V-600/347V 3Ø TRANSFORMER
3	1	OPEN	OPEN	12CCT 600V ELECTRICAL PANEL C/W BREAKERS
4	2	OPEN	OPEN	LIGHTING CONTACTOR
5	1	OPEN	OPEN	PHOTOCELL
6	1	TOTAL PROTECTION	TK-TT2-100-1S240-FL	SURGE PROTECTION DEVICE
7	1	OPEN	OPEN	40A, 240V BREAKER FOR EXISTING PANEL
8	1	OPEN	OPEN	AUTOMATIC TRANSFER SWITCH
9	1	OPEN	OPEN	12kW GENERATOR
10	1	OPEN	OPEN	STAINLESS STEEL OR ALUMINUM NEMA 3R PANEL WITH LEXAN PHOTOCELL WINDOW



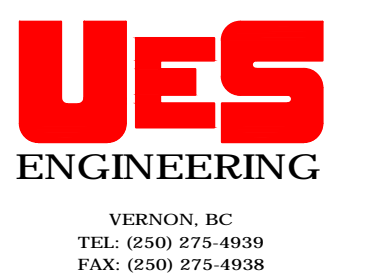
STREETLIGHT POLE WIRING DIAGRAM
SCALE: NTS



TRENCH DETAILS
SCALE: 1:20

No.	DATE	DESCRIPTION	BY	APP'D
2	APR 28/20	ISSUED FOR REVIEW	JB	TDU
1	SEPT 18/19	ISSUED FOR REVIEW	JB	TDU

ISSUES / REVISIONS

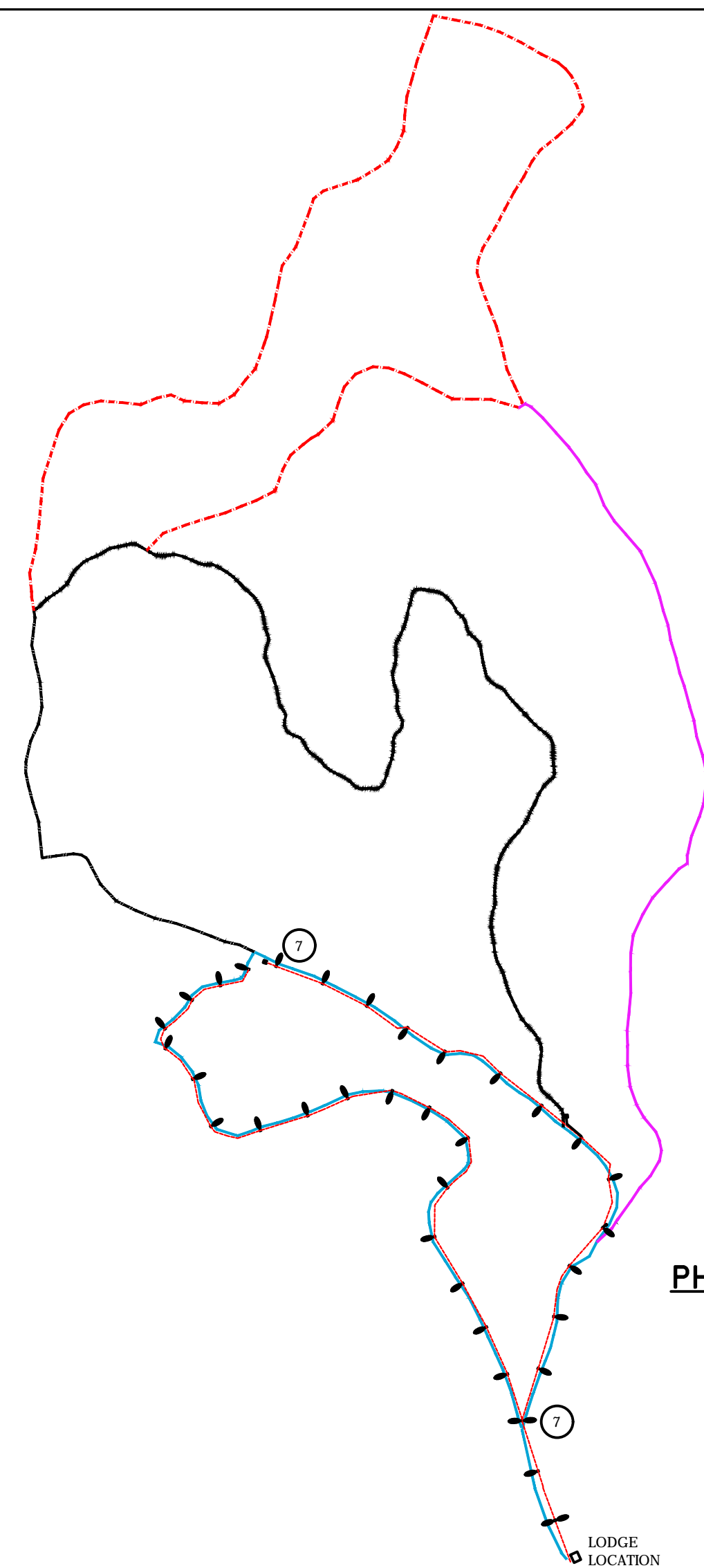


SCALE:	AS SHOWN
DATE:	JULY 2019
DESIGNED BY:	JB
DRAWN BY:	JB
CONSULTANT SEAL:	

LARCH HILLS
NORDIC
TRAIL
STREETLIGHTS

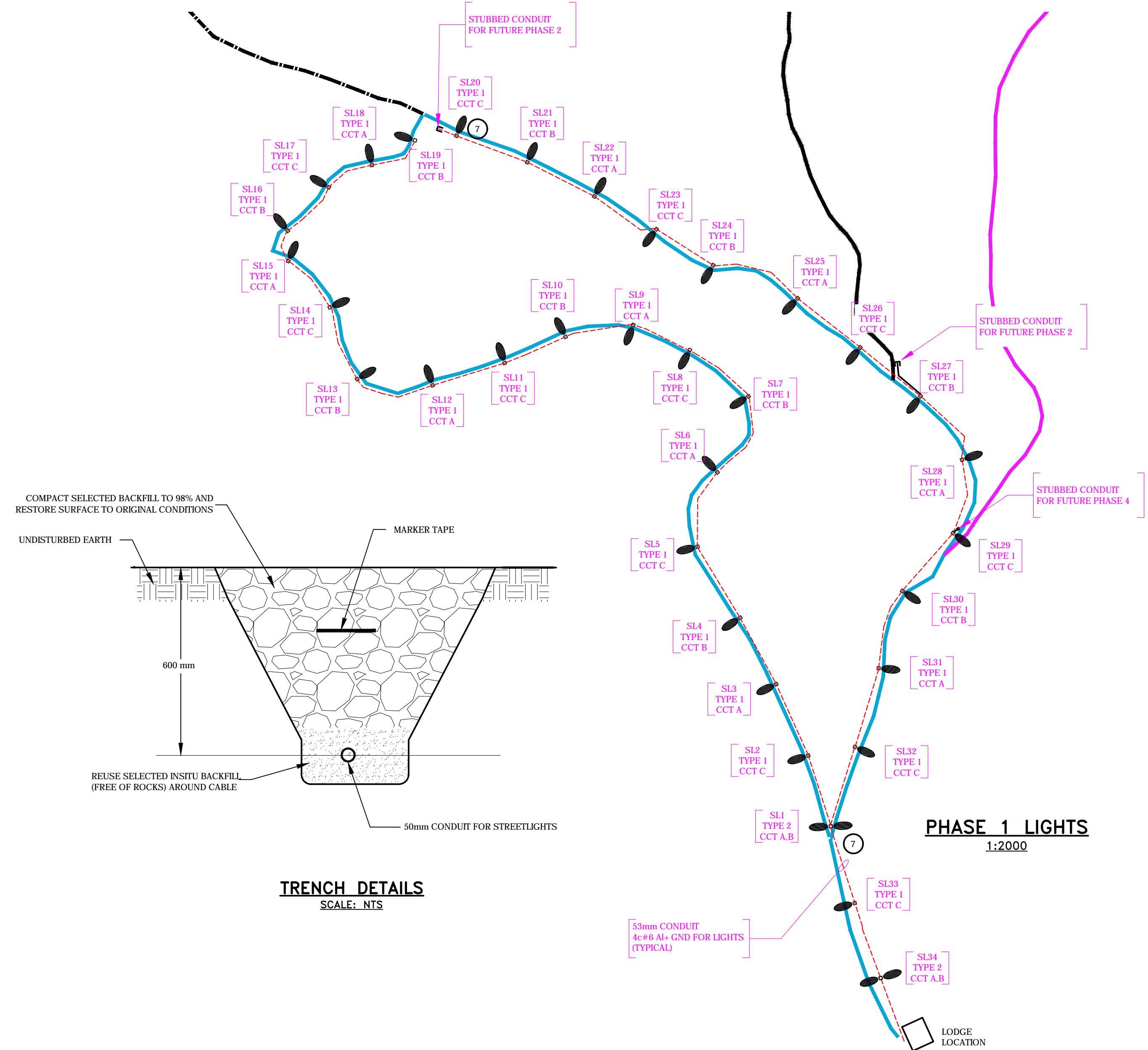
SINGLE LINE
AND
ELECTRICAL
DETAILS

PROJECT #:	DRAWING #:
199-001	E1

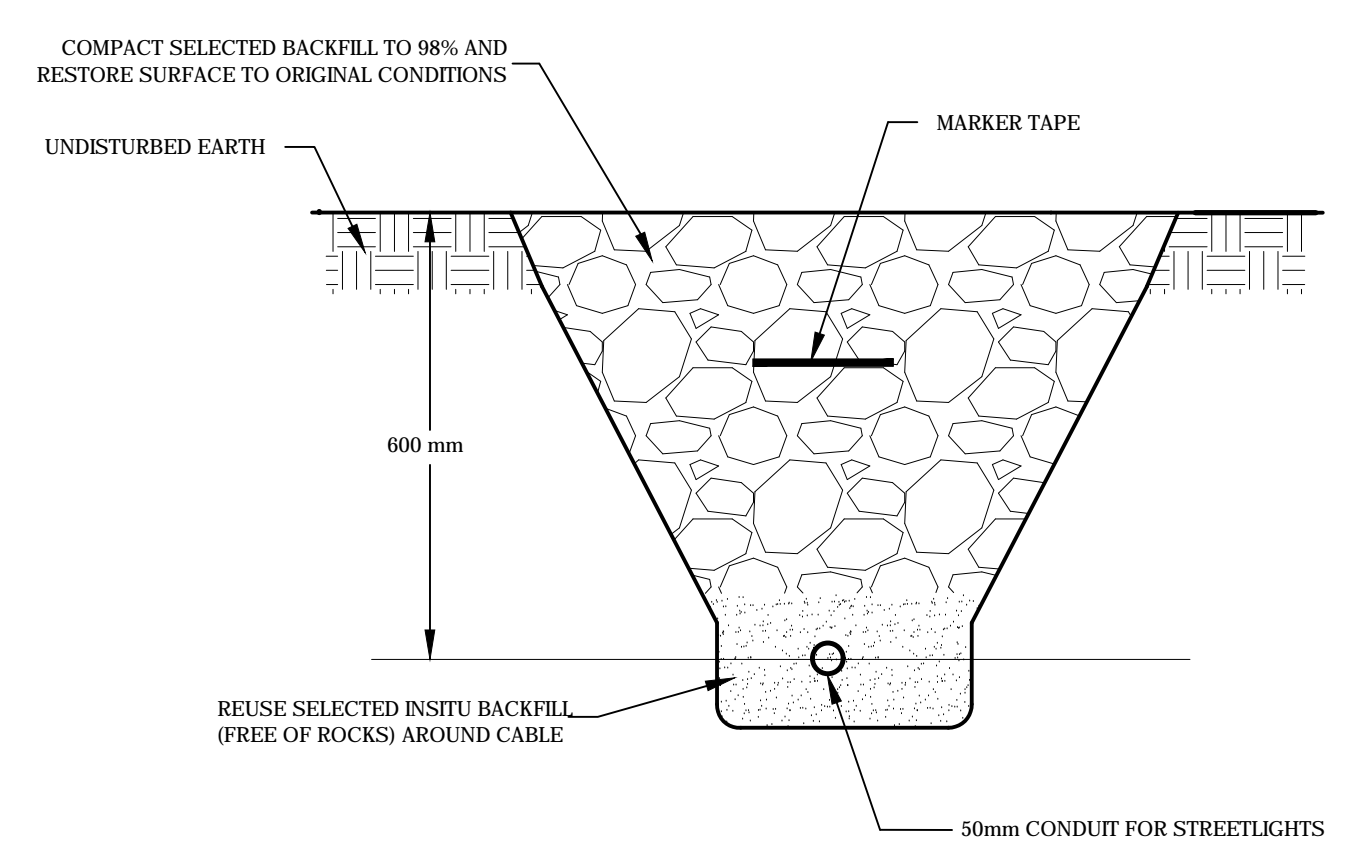


— Phase 1 — 1.63 km
 — Phase 2 — 1.79 km
 - - - Phase 3 — 1.77 km
 — Phase 4 — 0.91 km

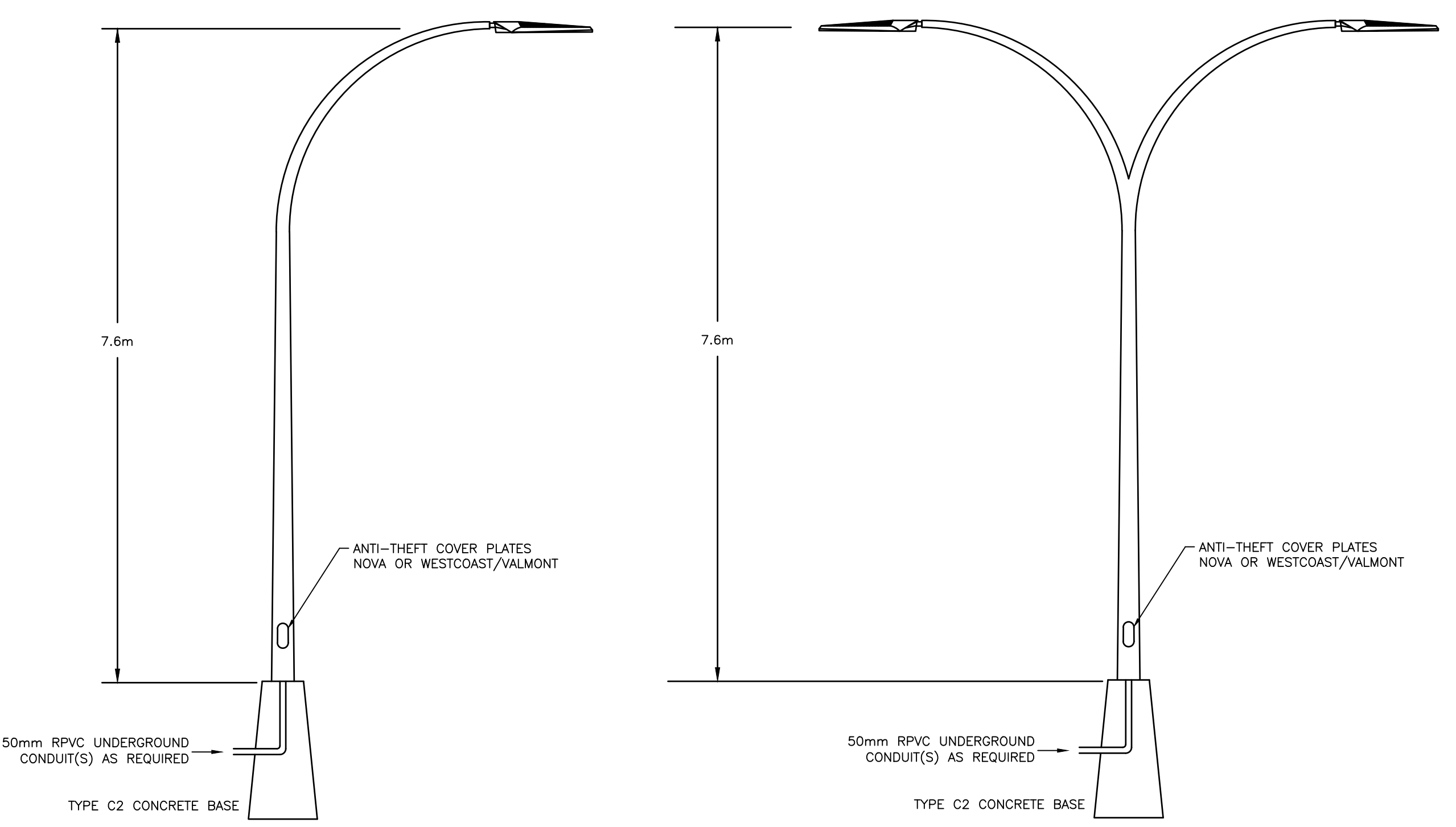
PHASES 1-4 TRAILS
SCALE: 1:5000



PHASE 1 LIGHTS
SCALE: 1:2000



TRENCH DETAILS
SCALE: NTS



TYPE 1 POLE DETAILS
SCALE: NTS

TYPE 2 POLE DETAILS
SCALE: NTS

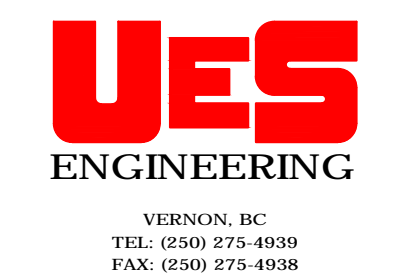
MATERIAL LIST				
ITEM	QTY	MANUFACTURER	PART #	DESCRIPTION
1	1	TOTAL PROTECTION	TK-PK050R-3Y600-L	SURGE PROTECTION DEVICE
2	34	OPEN	OPEN	TYPE C2 CONCRETE BASE PER MMCD

LUMINAIRE SCHEDULE				
QTY	LUMINAIRE	POLE	DESCRIPTION	LLF
2	RFS-45W12LED3K-G2-R2M	NOVA POLE SD-258	48W TYPE 2 LED ON DOUBLE DAVIT 7.6m POLE	0.81
34	RFS-45W12LED3K-G2-R2M	NOVA POLE SD-258	48W TYPE 2 LED ON 7.6m POLE	0.81

- NOTES:
- CONTRACTOR SHALL INSTALL STREETLIGHTS AND CONDUIT AS PER:
 - MASTER MUNICIPAL CONTRACT DOCUMENTS (MMCD)
 - CANADIAN ELECTRICAL CODE
 - ALL CONDUIT TO BE 50mm RPVC. CONTRACTOR SHALL USE SAND BEDDING OF 3" BELOW AND ABOVE CONDUIT
 - A 150mm MARKER TAPE SHALL BE PLACED IN THE TRENCH CENTRED BETWEEN THE TOP OF THE CONDUIT AND FINISHED GRADE.
 - CONTRACTOR TO CONTACT ENGINEER PRIOR TO INSTALLATION AND TO ALLOW INSPECTION PRIOR TO BACKFILL.
 - ALL POLES AND LUMINAIRES TO BE HOT DIPPED GALVANIZED.
 - CONTRACTOR TO ENSURE POLE AND BOLT PATTERNS MATCH MMCD TYPE C2.
 - ALL LUMINAIRES TO HAVE SURGE PROTECTION.
 - FUSING ON EACH POLE PER MMCD STANDARDS.

No.	DATE	DESCRIPTION	BY	APPR
2	APR 2020	ISSUED FOR REVIEW	JB	TDU
1	SEPT 18/19	ISSUED FOR REVIEW	JB	TDU

ISSUES / REVISIONS	



SCALE: AS SHOWN
 DATE: JULY 2019
 DESIGNED BY: JB
 DRAWN BY: JB

CONSULTANT SEAL:

LARCH HILLS NORDIC TRAIL STREETLIGHTS

PHASE 1 LIGHTS

PROJECT #: **199-001**
 DRAWING #: **E2**