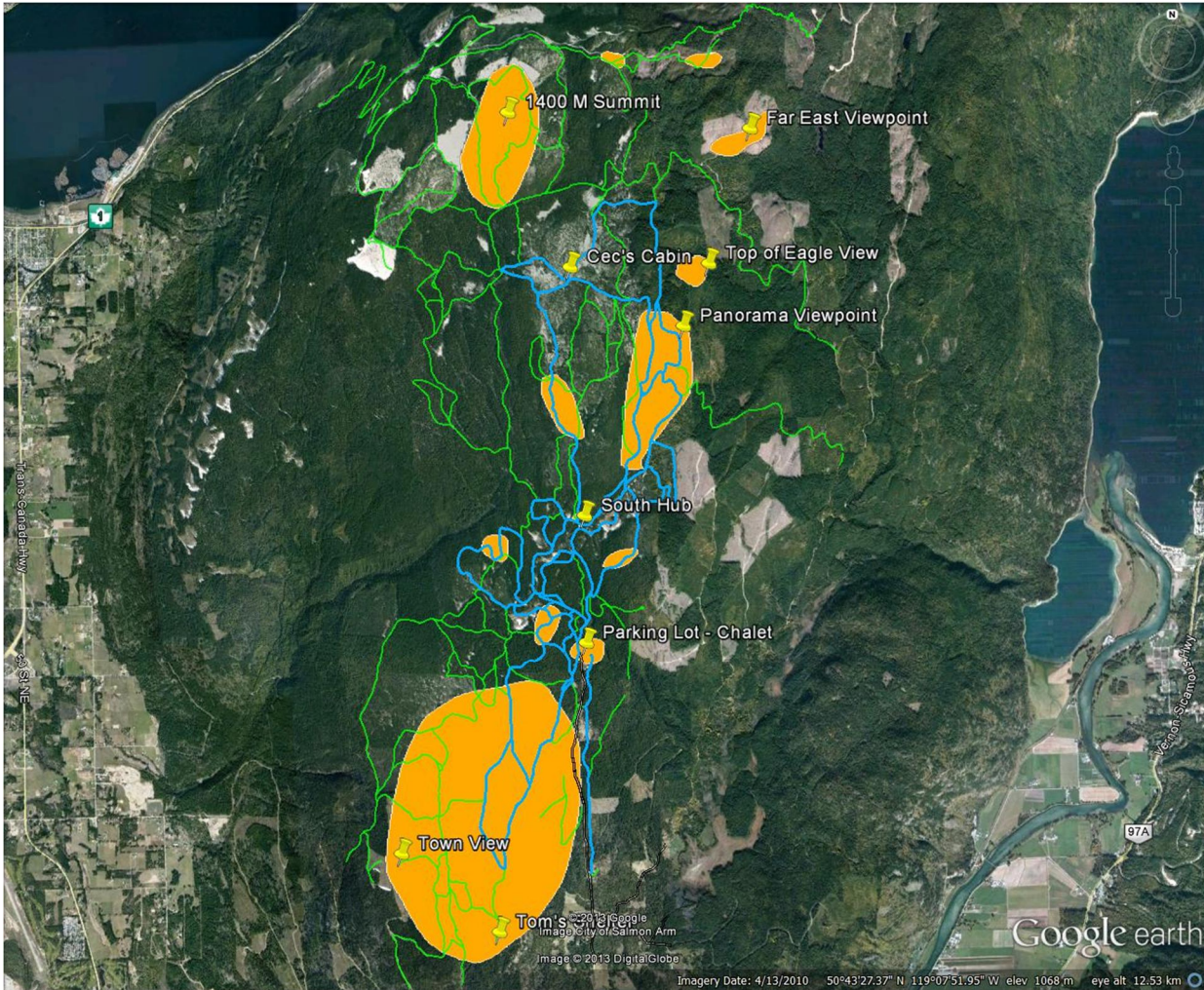


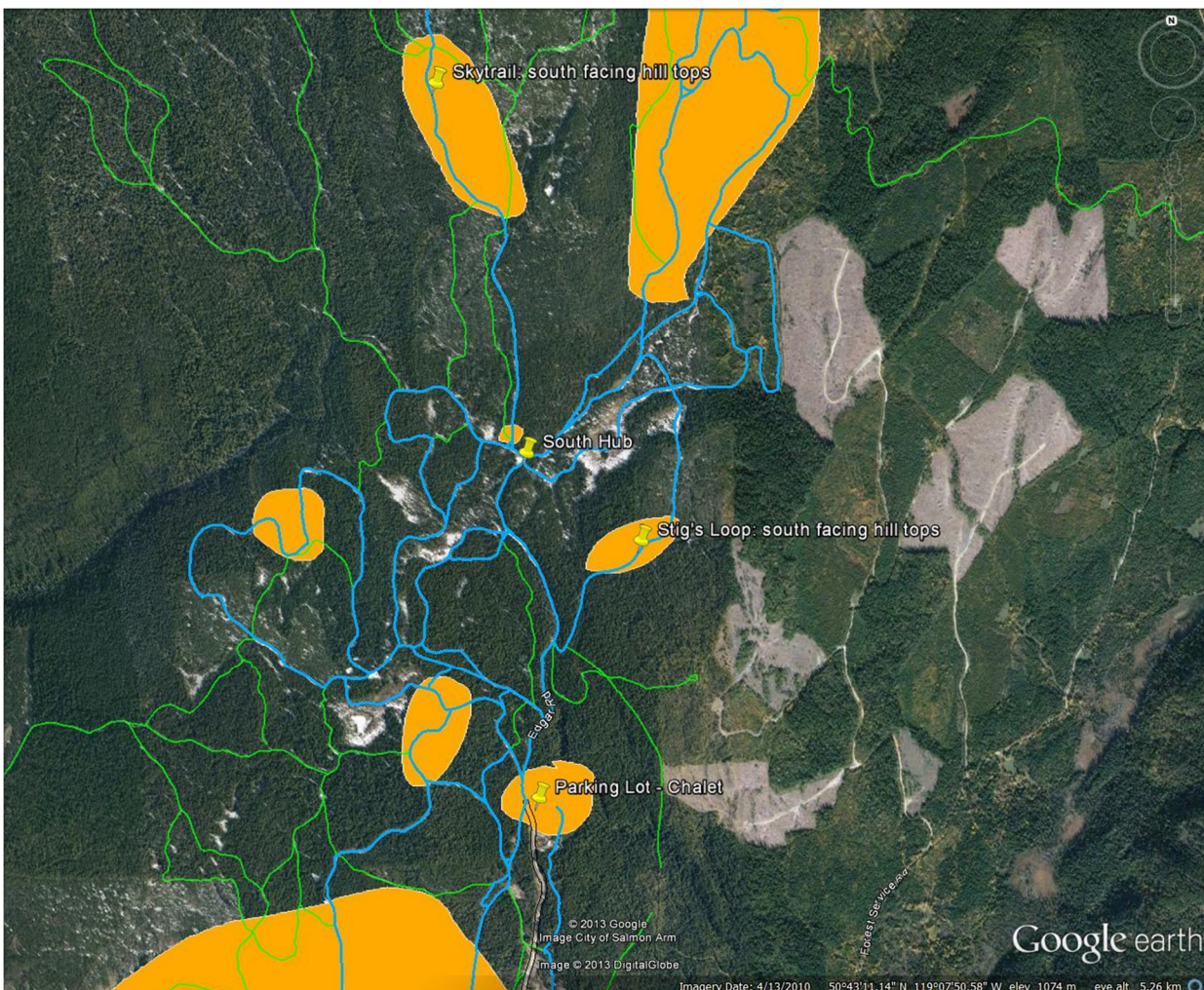
Larch Hills Trails TELUS Network Cell Phone Hot Zones – February 2013

- Based on over 60 TELUS Cell Phone Hot Spots 'hits' on mostly Track set trails.
- New and old cell phones used to check reception – minimum 2 Bars required to qualify as a Hot Spot.
- Low lying locations within a Hot Zone may have <2 Bars, High locations may have better reception.
- A Rogers Network Cell Phone Hot Zones map is in the works.
- Report signif. new 'hits' or corrections to this TELUS Hot Zones map and Safety suggestions to the LHNS Safety Committee (currently Jim Ellis: jellis47@shaw.ca and George Zorn: gjzorn@shaw.ca).

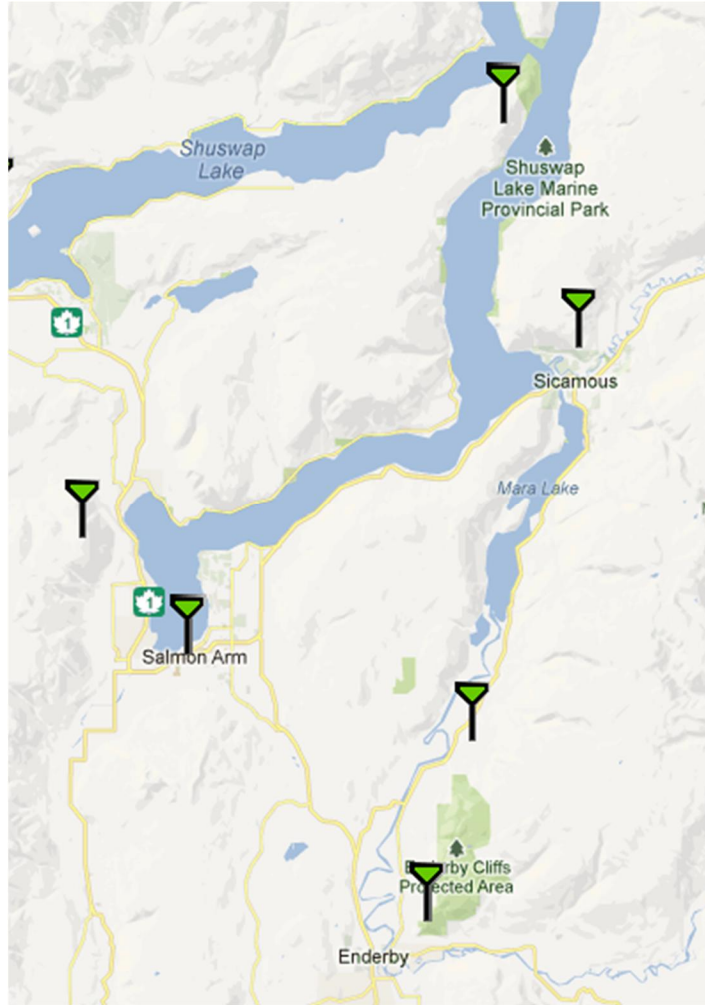
"Big Picture":



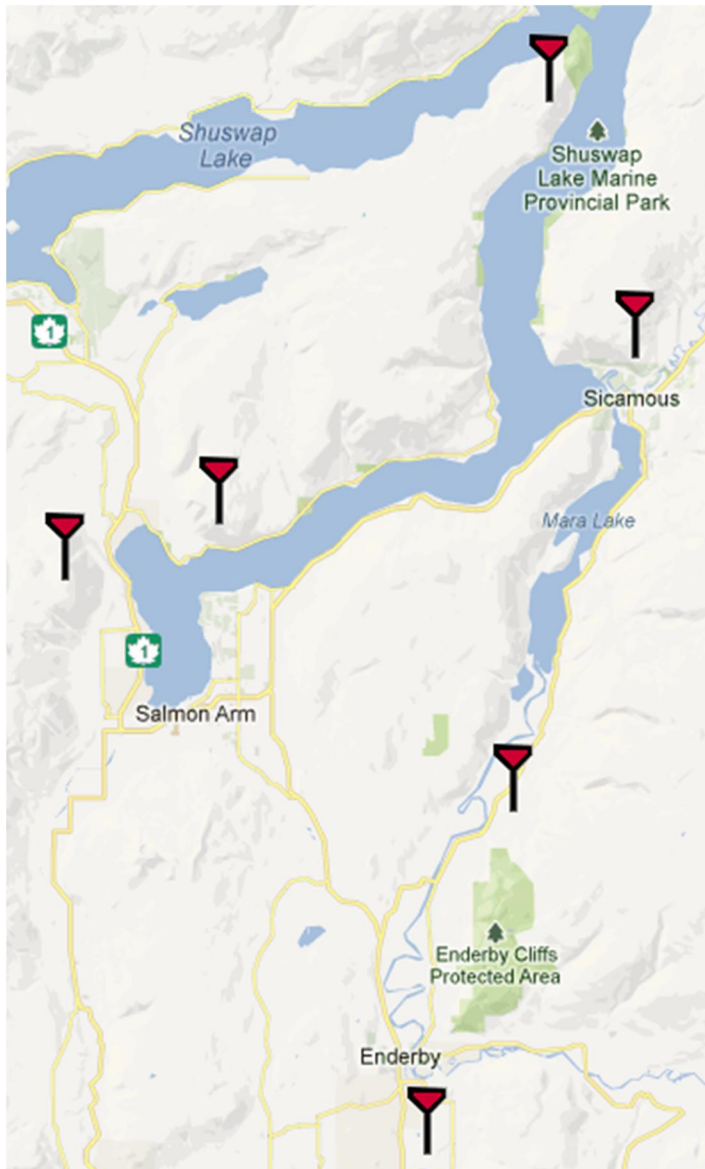
Near Chalet & Parking Lot:



TELUS Cell Towers in proximity to Larch Hills – February 2013:



Rogers Cell Towers in proximity to Larch Hills – February 2013:



Source: http://www.ertyu.org/steven_nikkel/cancellsites.html (no Bell Cellular Tower locations identified)